

RTV-SIS | Small Inline Slate Vent

Small Inline Slate Vent to enable ventilation directly into a roof space or connect to a ducted ventilation system

Uses

- On roofs with Natural or Synthetic Slates
- Enables ventilation directly into a roof space
- Can also be connected to a ducted ventilation system inside the building

Features and Benefits

- Suitable for roofs with a minimum pitch of 22.5°
- Free ventilation area of 9,450mm².
- Sized to replace one slate to provide a continuous visual appearance along the roof when viewed at all levels
- Shaped to manage and channel rainwater back down onto the roof tiles and away from the vent opening
- Provides a 110mm duct connection with the optional RTV-ADIS duct adapter
- 4mm spaced external grille to prevent rainwater ingress and keep out large insects, vermin and debris
- Lightweight and easy to handle

Relevant Standards

- BS EN 490:2011 Concrete roofing tiles and fittings for roof covering and wall cladding - product specifications (+A1:2017)
- BS 5250: 2021 Management of moisture in buildings – Code of practice
- BS 5534:2014 Slating and tiling for pitched roofs and vertical cladding – code of practice (+A2:2018)
- Manufactured to BS EN ISO 9001:2015 and BS EN ISO 14001:2015
- Complies with all relevant sections of the Building Regulations 2010
- Satisfies all relevant NHBC requirements

Compatibility

Natural or Synthetic slates from all major manufacturers in smaller sizes such as:

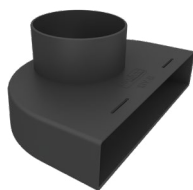
- 400 x 250mm
- 400 x 225mm
- 400 x 200mm
- 350 x 250mm
- 350 x 200mm
- 300 x 200mm

Product Codes

Product Description	Colour	Weight	Box Quantity	Product Code	Pack Quantity	Pack Code	Pallet Quantity
Small Inline Slate Vent	Black	0.64kg	1	RTV-SISBL	5	RTVMULTI-SISBL	120

Accessories

- The Inline Slate Adapter (RTV-ADIS) can be used to attach the vent to 110mm ductwork
- The 110mm Flexi-Pipe (RTV-KIT1) can be used to aid connection to ventilation duct or soil vent pipe
- Can be connected to 100/110/125/150mm duct sizes when combined with the multi adapter (RTV-ADMULTI)



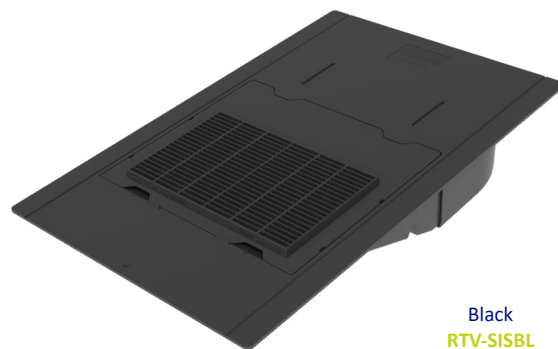
Inline Slate Adapter **RTV-ADIS**



Multi Adapter **RTV-ADMULTI**



110mm Flexi-Pipe **RTV-KIT1**

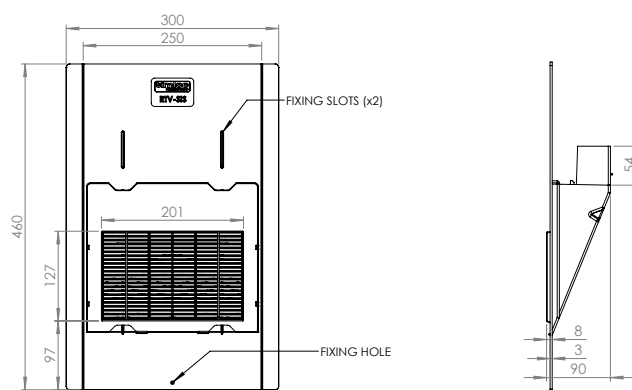


Black
RTV-SISBL

Material and Colour Choice

- Injection moulded Polypropylene with textured finish
- Available in Black

Product Dimensions



Top Profile

Side Profile

NB. RTV-SISBL available in single, pack or pallet quantities. For pack quantities, 5 Small Inline Slate vent assemblies are packaged in one large box.