



Features of the Ductile Iron Coupling

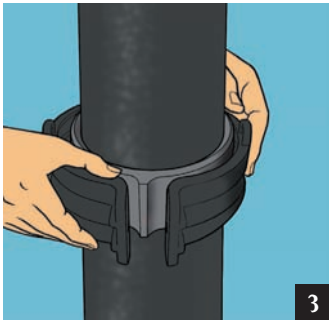
- Two piece coupling manufactured from ductile iron BS EN 1563
- Zinc plated socket cap locking screw and nut M8 x 40 for 50mm-100mm and M8 x 55 for 150mm (6mm Allen drive)
- 2 locking screws on 50mm-100mm and 4 locking screws on 150mm diameter
- EPDM sealing ring
- For use up to and including 0.5 bar internal pressure



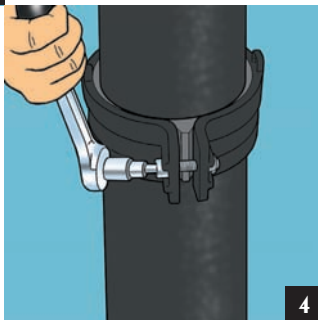
1



2



3



4

Joining Method for Ductile Iron Couplings

Step 1

Check the components- 2 part coupling and EPDM gasket, 2 x M8 bolts and nuts for 50mm - 100mm diameter, 4 x M8 nuts and bolts for 150mm diameter.

Step 2

Fit the gasket to the lower pipe first, line up the upper pipe and fit carefully into place. Make sure the two pipes are square and parallel and line up correctly with the gasket.

Step 3

Line up the two parts of the coupling ensuring they fit correctly over the gasket.

Step 4

Bolt the two parts of the coupling together and gradually tighten. Avoid tightening only one side at a time and ensure an equal distance is maintained during assembly. Do not over tighten; the optimum torque setting is 15Nm.

If couplings with electrical continuity are required these are available with grub screws fitted which when tightened provide this feature.



1 The Mech 416 Bismat Bracket

Can be used for vertical and horizontal operations for pipe sizes 50mm-150mm diameter. Supplied zinc plated and rubber lined only.

This patented bracket features:

- Unique automatic locking system
- Captivated combi slot locking screw
- M8/M10 tapped bosses on 50mm-100mm sizes
- M10 tapped boss on 150mm size
- Ageing resistant EPDM rubber lining



2 The Mech 416 Heavy Duty Bossed Bracket

Available in a zinc plated finish unlined as standard for pipe sizes 50mm-150mm diameter. Also available rubber lined.

This bracket features:

- 2 x M8 locking screws on sizes 50mm-100mm
- 2 x M10 locking screws on sizes 150mm
- M8/M10 tapped boss on size 50mm
- M10/M12 tapped boss on sizes 70mm-150mm
- Can be fixed both horizontally and vertically



3 The Mech 416 Galvanised Steel Pipe Clamp

Two part clamp: one side hinged the other side with locking screw. For pipe sizes 50mm-150mm diameter.

This clamp features:

- Specially developed for cast iron drainage pipe
- Hinged
- Hot dipped galvanised
- Resistance welded connecting nut M10 on all sizes
- Can be fixed both vertically and horizontally



4 The Mech 416 Split Band Clip

Two part band, zinc plated as standard, supplied with locking nuts and bolts for pipe sizes 50mm-150mm diameter.

This bracket features:

- Zinc plated as standard
- Can be fixed both vertically and horizontally
- Supplied complete with nuts and bolts