

RTV-MC | Mini Castellated Roof Tile Vent

Profiled roof tile vent to enable ventilation directly into a roof space or connect to a ducted ventilation system

Uses

- On roofs with Mini Castellated roof tiles
- Enables ventilation directly into a roof space
- Can also be connected to a ducted ventilation system inside the building

Features and Benefits

- Suitable for roofs with a minimum pitch of 17.5°
- Free ventilation area of 5,000mm².
- Sized to replace one Mini Castellated tile to provide a continuous visual appearance along the roof when viewed at all levels
- Provides a 110mm duct connection as standard
- Shaped to manage and channel rainwater back down onto the roof tiles and away from the vent opening
- 4mm spaced external grille to prevent rainwater ingress and keep out large insects, vermin and debris
- Integrated clips to ensure a secure fit to surrounding roof tiles
- UV stabilised top for continuous exposure to sunlight
- Lightweight and easy to handle

Relevant Standards

- BS EN 490:2011 Concrete roofing tiles and fittings for roof covering and wall cladding - product specifications (+A1:2017)
- BS 5250: 2021 Management of moisture in buildings – Code of practice
- BS 5534:2014 Slating and tiling for pitched roofs and vertical cladding – code of practice (+A2:2018)
- Manufactured to BS EN ISO 9001:2015 and BS EN ISO 14001:2015
- Complies with all relevant sections of the Building Regulations 2010
- Satisfies all relevant NHBC requirements

Compatibility

Mini Castellated small format tiles from all major manufacturers including:

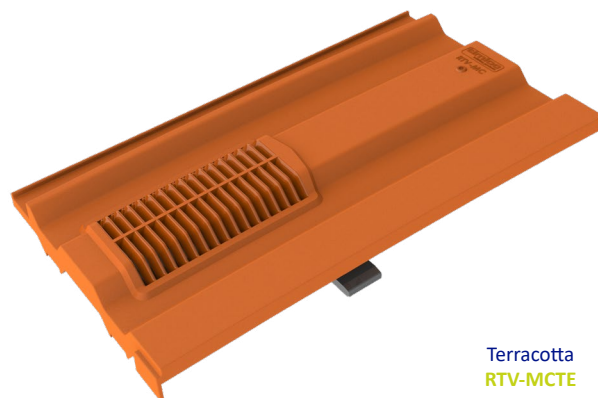
- Marley Ludlow Plus
- Redland 49
- Sandtoft Standard Pattern
- Forticrete V2

Product Codes

Product Description	Colour	Weight	Box Quantity	Product Code	Pack Quantity	Pack Code	Pallet Quantity
Mini Castellated Roof Tile Vent	Terracotta	0.63kg	1	RTV-MCTE	14	RTVMULTI-MCTE	238
Mini Castellated Roof Tile Vent	Brown	0.63kg	1	RTV-MCBB	14	RTVMULTI-MCBB	238
Mini Castellated Roof Tile Vent	Grey	0.63kg	1	RTV-MCGR	14	RTVMULTI-MCGR	238
Mini Castellated Roof Tile Vent	Red	0.63kg	1	RTV-MCRD	14	RTVMULTI-MCRD	238

Accessories

- The 110mm Flexipipe (RTV-KIT1) can be used to aid connection to ventilation duct or soil vent pipe
- Can be connected to 100/110/125/150mm duct sizes when combined with the multi adapter (RTV-ADMULTI)



Terracotta
RTV-MCTE



Brown
RTV-MCBB



Grey
RTV-MCGR

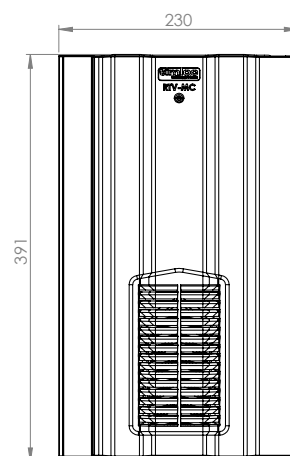


Red
RTV-MCRD

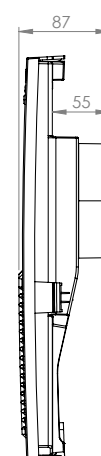
Material and Colour Choice

- Top - UV stabilised coloured injection moulded Polypropylene with textured finish
- Available in Terracotta, Brown, Grey, Red and Black
- Base – Black injection moulded Polypropylene

Product Dimensions



Top Profile



Side Profile

NB. RTV-MC available in single, pack or pallet quantities. For pack quantities, 14 tile vent assemblies are packaged in one large box.



Multi Adapter RTV-ADMULTI



110mm Flexipipe RTV-KIT1