



WATER STORAGE SOLUTIONS



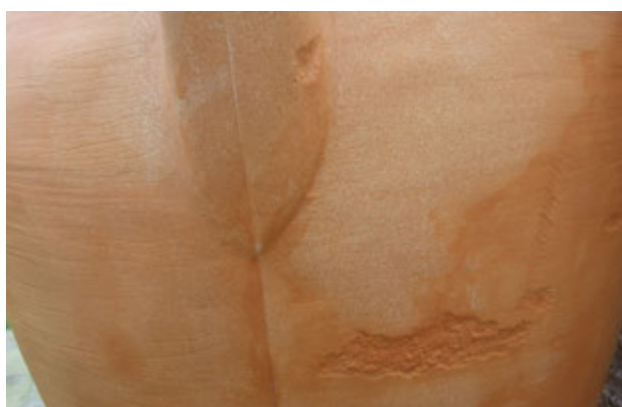
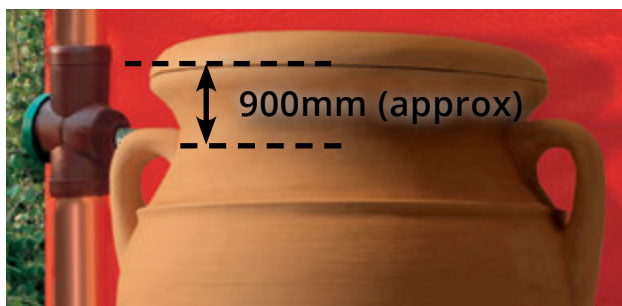
TERRACOTTA

Terra is an imposing classic terracotta urn design and makes for a distinct garden feature with bold curved lines. Comes with a brass tap.

TERRA300

300Ltrs (h): 1200mm x (d): 780mm

CONNECTION POINTS

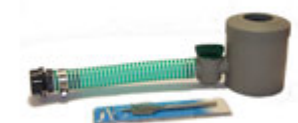


One side is smooth the other is distressed - choose the look you prefer

ACCESSORIES



- **Universal Fit Diverter with Filter** (tank connector and hose) RC2BL, RC2G, RC2WH or RC2B in black, grey, white or brown



- **Universal Fit Diverter with Tap** (tank connector and hose) RC1G, RC1B in grey, or brown



- **Universal Long Link Kits** - 9000123U, 9000123UU2, or 9000123UU5 for the 1, 2 or 5 metres lengths



- **3/4" Tank to Tank Connection Kit** - 9000326



- **Hole-saw kit with rubber grommets** required to make hole for tank to tank connector

Delivered free along with the water butt (otherwise delivery charge of £5 will apply)

INSTALLATION INSTRUCTIONS

Delivered with a full kit including a brass tap and hole saw. We recommend using the our Universal Fit Diverter with Filter (or with Tap) to fill the waterbutt. You may also use other UK diverters but you'll need to refer to the instructions that come with that particular diverter.

Where the waterbutt cannot be located within 30cm of the downpipe, ask about our longer Universal Long Link Kits available to order in 1, 2 or 5 metres lengths. Order the closest size above the required length and cut down.



1. Setting Up

Site the waterbutt on a firm, level surface, adjacent to the downpipe.



2. Fitting a Universal Fit Diverter with Filter or with Tap/Connection to the downpipe

Measure down 90mm from the lip of the waterbutt. This position is ideal for all connections at 32mm (1 1/4") or less.

Hold the backnut and rubber seal in position within the 32mm drilled hole, on the inside of the waterbutt, and screw in the hose tail from the outside.



3. Connecting the Tap

Screw the 3/4" tap provided in the kit into the 3/4" BSP connection thread. If necessary, use PTFE tape when installing the tap to create a more watertight seal and to ensure the tap sits in the correct position.



4. Connecting tanks

The base threads can also be used to connect pumps or other tanks. Tanks can be linked together using the 3/4" tank-to-tank connector (250 mm).



5. Childproof Lid

Using the screw provided, fasten the lid via the hole beneath the rim of the water butt.



7. Winter Care Precautions

To prevent any damage from being caused, water must be drained completely and disconnect from the rainwater inlet during freezing weather conditions.