

**SKYLINE<sup>®</sup>**

FASCIA SOFFIT COPINGS

# Skyline Overview Brochure



**ALUMASC**

WATER MANAGEMENT SOLUTIONS







AlumasC is a UK-based supplier of premium building products. The majority of the group's business is in the area of sustainable building products which enable customers to manage energy and water use in the built environment.

All AlumasC businesses have strong UK market positions within their own individual market niches and several are market leaders. AlumasC sustains this strong strategic positioning by offering customers quality products, service and trust. For certain brands, AlumasC is seeking to leverage UK successes in international markets, with particular focus in America, the Middle and Far East, and Europe.

AlumasC fosters an entrepreneurial, achievement orientated culture whereby businesses are encouraged to innovate and respond quickly to local market needs within a cohesive group strategic and management framework. AlumasC businesses also benefit from the group's financial strength.

AlumasC Water Management Solutions (AWMS) is the new name in the industry for proven water management. It's a new joined-up brand that harnesses the expertise of five trusted brands in water management.



Greenfields School // Leighton Buzzard

[www.alumascwms.co.uk](http://www.alumascwms.co.uk) • [info@alumascwms.co.uk](mailto:info@alumascwms.co.uk) • 01536 383 810



# The Range

## About Skyline

Skyline includes fascia and soffits, copings, cills and surrounds all available in high quality, in-house, BBA certified powder coated aluminium.

The complete range is the ideal solution for use on roofing and gutter interfaces with standard and fully bespoke designs available. Skyline suits both contemporary and traditional architecture and are designed to meet industry standards whilst exceeding expectations in durability, design and performance. Our products have been used in some of the most prestigious construction projects in the UK.

Skyline fascia and soffit components are designed to be used in conjunction with Alumasc's aluminium rainwater systems, in particular the GX range of folded aluminium gutters, providing a complete eaves and roof drainage solution. Alumasc Technical Services can assist in the design of a fixing and support framework to suit individual project requirements. A design and fabrication service is also available for bespoke fascia profiles to suit special project requirements.

Skyline is not a rigid set of standard components, but a product rationale, developed to exploit the potential of Alumasc's wide ranging production capability in pressed and folded aluminium.

Skyline Fascias and Soffits offer top of the range roof edge details to suit all designs and budgets. Skyline systems are manufactured from high quality, polyester coated aluminium and are available in four bold generic shapes with bespoke designs available to order.

## Technical Support

Alumasc can offer advice from the first pencil sketches right up to site installation. Our technical support team can advise at the outset what is physically possible with the materials selected and the choices made, in order to optimise designs and avoid unforeseen costs at order and installation stages.

Once the architectural details are agreed, full working drawings are produced with client approval required prior to fabrication. Alumasc will optimise both delivery schedules and installation details to ensure on-site operations are efficient and trouble-free. Simple to follow instructions and layouts are available for every Alumasc scheme making on time project delivery, in the critical closing phases, a reality.

***“With Alumasc Skyline the only limitation is imagination: if it can be made, we can make it”***



## Fascias

Top of the range roof edge details to suit all designs and budgets. Whether you choose from the standard range or bespoke design, the Skyline Fascia system is manufactured from high quality, polyester powder coated aluminium and is available in four bold generic shapes with bespoke designs available to order.



## Soffits

The Skyline Soffit Plank is a secret fix modular planking system designed to work on overhanging soffits and canopies or as part of a Skyline fascia scheme.



## Copings

The Skyline Coping system provides an economical and easily installed capping to upstand parapets, in conjunction with flat or pitched roofs. The strap fixing method avoids penetration of the capping, whilst allowing ventilation over the top of the wall. Skyline Copings are equally suited to retrofit and new build projects.



## Cills & Surrounds

As well as the standard range, Skyline Cills and Surrounds can be made to your exact specification. If you can't find the correct colour from our 26 standard colours, we can provide Cills and Surrounds in any RAL colour, so you can ensure an exact match for your project.

With the longevity you can expect from an Alumasc product, the Cills and Surrounds will provide a perfect finish to the building.



## Bullnose Anti-climb

Designed with security in mind, preventing unauthorised access to the building roofscape. Skyline anti-climb barriers comprise support brackets and preformed barrier sections. They can be fitted in front of virtually any gutter profile, resulting in a bold architectural feature.



## Column Casing

Architecturally striking aluminium column casings, designed to meet any profile and size requirements. Suitable for both external and internal applications, easy to install with minimal visual fixings.



# Fascias

Top of the range roof edge details to suit all designs and budgets. Whether you choose from the standard range or bespoke design.

The Skyline Fascia system is manufactured from high quality, polyester powder coated aluminium and is available in four bold generic shapes with bespoke designs available to order.



Guardian // Jersey



# Fascias

The exciting Skyline Fascia and Soffit system is based on aluminium fascia profiles in a range of shapes and sizes, engineered to the highest standard on a project by project basis to suit any architectural requirements

The fascia profiles fully enclose the gutter and may be projected direct from the elevation or combined with the soffit plank to give varying eaves overhangs.



Langley Court // Beckenham

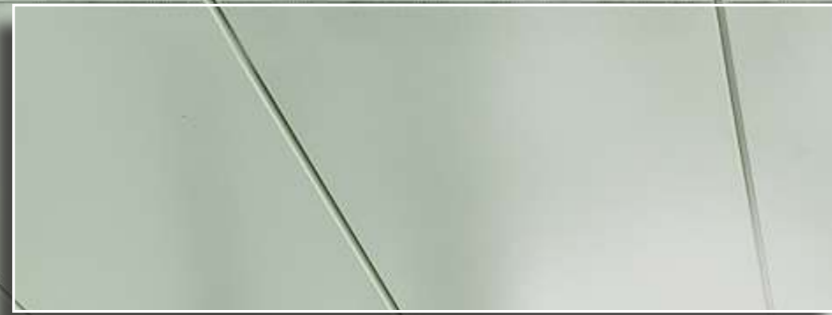
[www.alumascwms.co.uk](http://www.alumascwms.co.uk) • [info@alumascwms.co.uk](mailto:info@alumascwms.co.uk) • 01536 383 810



# Soffits

Made to suit all designs and budgets, the Skyline Soffit system is manufactured from high quality, polyester powder coated aluminium and is available in a standard range as well as bespoke designs available to order.

The Skyline Soffit plank is a secret fix modular planking system designed to work on overhanging soffits and canopies or as part of a Skyline fascia scheme.





# Soffits

Made to suit all designs and budgets, the Skyline Soffit system is manufactured from high quality, polyester powder coated aluminium and is available in a standard range as well as bespoke designs available to order.

The Skyline Soffit plank is a secret fix modular planking system designed to work on overhanging soffits and canopies or as part of a Skyline fascia scheme.



Wimbledon // London



# Copings

The Skyline Coping system provides an economical and easily installed capping to upstand parapets, in conjunction with flat or pitched roofs.

The strap fixing method avoids penetration of the capping, whilst allowing ventilation over the top of the wall. Skyline Copings are equally suited to retrofit and new build projects.

Queensland Road // London



# Copings



**Bromyard Ave // London**

[www.alumascwms.co.uk](http://www.alumascwms.co.uk) • [info@alumascwms.co.uk](mailto:info@alumascwms.co.uk) • 01536 383 810



# Cills & Window Surrounds

As well as the standard range, Skyline Cills and Surrounds can be made to your exact specification. If you can't find the correct colour from our 26 standard colours, we can provide Cills and Surrounds in any RAL colour, so you can ensure an exact match for your project.

With the longevity you can expect from an Alumasc product, the Cills and Surrounds will provide a perfect finish to the building.

Kingswood // Bristol



# Cills & Window Surrounds



Princess Hay  
Shopping Centre // Exeter

[www.alumascwms.co.uk](http://www.alumascwms.co.uk) • [info@alumascwms.co.uk](mailto:info@alumascwms.co.uk) • 01536 383 810



# Bullnose Anti-climb

Skyline bullnose profile offers a stylish contemporary fascia profile appearance which can be designed to meet any project requirement. Our anti-climb product is a curved aluminium profile which can be fitted to low roof pitches and wall areas to prevent people from climbing onto them. The curved profiles are non-threatening and non-obtrusive in appearance and can be powder coated in any RAL colour.





# Bullnose Anti-climb

Designed with security in mind, preventing unauthorised access to the building roofscape. Skyline anti-climb barriers comprise support brackets and preformed barrier sections. They can be fitted in front of virtually any gutter profile, resulting in a bold architectural feature.





# Column Casing

Architecturally striking aluminum column casings, designed to meet any profile and size requirements. Suitable for both external and internal applications, easy to install with minimal visual fixings.



**Bealieu Square // Chelmsford**

[www.alumascwms.co.uk](http://www.alumascwms.co.uk) • [info@alumascwms.co.uk](mailto:info@alumascwms.co.uk) • 01536 383 810



# Specification

## Innovative

Aluminium is a young material, but has become the world's second most used metal after steel. It is known as 'the magic metal' because of its unique physical, chemical and mechanical properties which make it ideal for use in rainwater gutter and downpipe systems.

## Design Flexibility

Aluminium can be formed in different ways to fulfil different functional purposes and create different visual effects. This allows great scope in the formation of architectural details, with appearance ranging from traditional to crisp and clean modern.

## Lightweight

The lightweight characteristics of aluminium fascia and soffit products mean that they are economical and easy to transport. Consequently handling is easier and installation faster, with resultant cost effectiveness.

## Life Expectancy

Alumasc aluminium fascia and soffit systems have a life expectancy in excess of 40 years in rural and suburban areas and up to 25 years in industrial and/or marine conditions. This greatly enhances the product's cradle to grave embodied energy figure relative to systems (e.g. plastic) with shorter life spans. This also results in the removal of the appreciable costs, both environmental and monetary, of product replacement.

## Ecological Benefits

Alumasc aluminium fascia and soffit goods contain no toxic substances and perform excellently when assessed from cradle to grave for effects on water quality (eutrophication) and water and ground contamination (ecotoxicity).

## Low Maintenance

In service, Alumasc aluminium fascia and soffit systems are virtually maintenance-free. Apart from routine cleaning for visual reasons and special consideration for coastal areas, aluminium does not require any maintenance being carried out, providing a cost benefit over its lifetime.

## Fire Regulations

Fire rating is one of the most important factors today. Solid aluminium sheet is classified as non combustible. Powder coated aluminium, Interpon D1000 series and D2000 series have been tested to BS476, parts 6 & 7 and have been deemed to have met the criteria for class 0 building regulation approval.

# Choice of Finish

Alumasc architectural fabrications offer a huge range of visual choice. The metal's natural protective coating of aluminium oxide gives a soft natural finish. An eye-catching choice of colours is available from Alumasc's Raincote range of powder coatings.

## Approvals & Quality Control

Polyester powder coating is in accordance with BS EN 12206-1:2004. This refers to the coating of aluminium and aluminium alloys for architectural purposes. In the case of rainwater systems it is accepted that such coating is both decorative and protective. Alumasc systems will certainly be finished to this standard, and will in most cases exceed it. Along with independent auditing to the ISO 9001:2008 Quality Management and ISO 14001:2004 Environmental Management Standards, Alumasc maintains BBA certification for the powder coating process of its aluminium rainwater goods in respect of longevity of performance and colour fastness: **British Board of Agrément Certificate No. 86/1671.**

Alumasc Aluminium Architectural Fabrications are available in plain mill finish for on site painting, or in the Raincote range of factory applied BBA approved polyester powder coating process.

## In-House Powder Coatings

Alumasc's in-house powder coating plant gives both the control and the freedom to produce a range of colour finishes to a level not typically available in the construction industry. Utilising the technologies and procedures adopted for its automotive precision castings division, Alumasc benefits from high specification coating techniques that fulfil the rigors of testing prescribed by some of the worlds leading vehicle producers. Finishes of this quality maintain their appearance even when subject to harsh geographical weather conditions.

The aluminium undergoes a series of pretreatments to provide the ideal prepared surface to receive an electrostatically applied polyester powder in the chosen colour. This is then 'baked' and bonded to the fitting in a carefully controlled oven; the complete process is achieved on a continuous line to obtain the best results. The performance of polyester powder coated rainwater systems greatly exceeds that of site painted systems.

## Choice of Colour

The standard aluminium Raincote range comprises 26 colours with additional colours with a BS or RAL number available to special order, subject to quantity and cost. The colours reproduced on this page are for general guidance only.

Please contact Alumasc marketing team for further information on colour choice and samples.

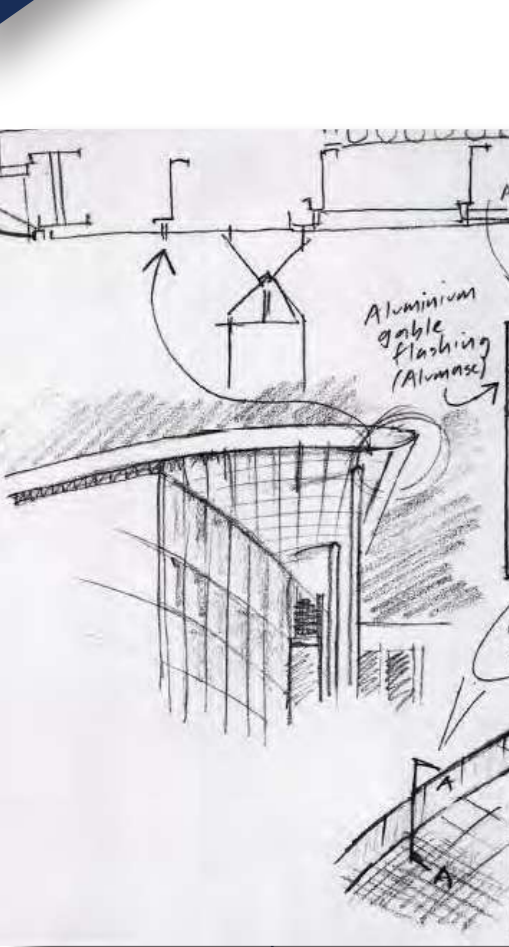
**\* Also available in a textured finish**

RAL 1011m Brown Beige
RAL 1013m Pearl White
RAL 1021m Cadmium Yellow
RAL 2002m Vermilion
RAL 3003m Ruby Red
RAL 3005m Wine Red
RAL 5003m Sapphire Blue
RAL 5010m Flower Blue
RAL 6005m Moss Green
RAL 6018m Yellow Green
RAL 7005m Mouse Grey
RAL 7006m Beige Grey
RAL 7012m Basalt Grey
RAL 7015m Slate Grey
RAL 7016m Anthracite Grey
RAL 7024m Graphite Grey
RAL 7036m Platinum Grey
RAL 7037m Dusty Grey
RAL 7038m Agate Grey
RAL 8017m Chocolate Brown
RAL 8019m Grey brown
RAL 9006m Metallic Silver
RAL 9006g Metallic Silver
RAL 9016m White
RAL 9017m Black
Textured Black

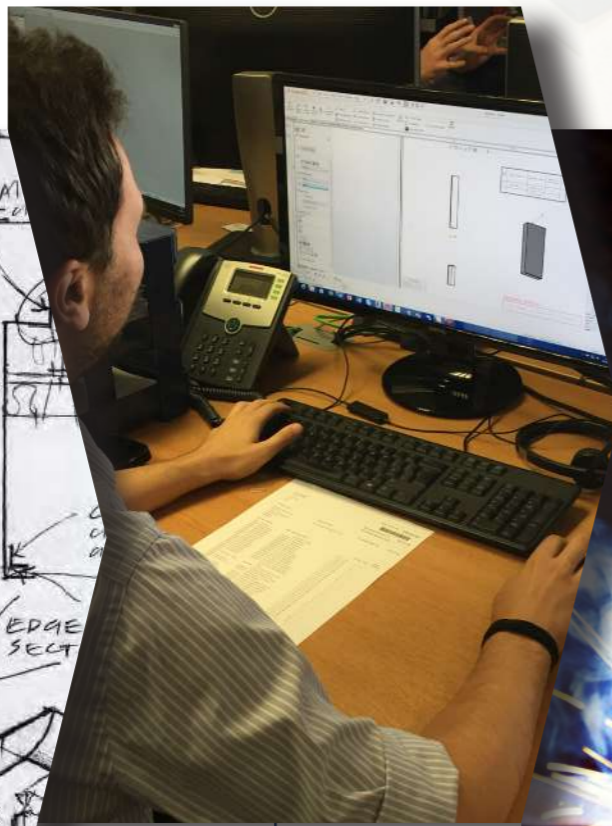


# Design & Manufacture Journey

*“With Alumasc Skyline the only limitation is imagination, if it can be made, we can make it”*



Concept design, sketch, detail & technical information, aesthetics and budget.



preparation CAD work for sign off, estimating and order processing.



Manufacture of intricate details and welding



Folding lengths on CNC machinery to profile shapes.



Finishing and pre-treatment, automated production line powder coating to BBA accreditation.



product completion, packaged ready to deliver to site, nationally.





Technical Support  
+44 (0) 1536 383810

[technical@alumascwms.co.uk](mailto:technical@alumascwms.co.uk)

Customer Services  
+44 (0) 1536 383810

[customerservices@alumascwms.co.uk](mailto:customerservices@alumascwms.co.uk)

Alumasc Water Management Solutions  
Station Road  
Burton Latimer  
Kettering  
Northamptonshire  
NN15 5JP

01536 383 810  
[info@alumascwms.co.uk](mailto:info@alumascwms.co.uk)

[www.alumascwms.co.uk](http://www.alumascwms.co.uk) @alumascwms