

The UK's number one stockist of metal rainwater and drainage products for new build, custom build, renovation and refurbishment.

## CASE STUDY

# Galvanised Steel

## Grey White Galvanised Steel The Lodge

### PROJECT NAME:

Grey White Galvanised Steel - The Lodge

### LOCATION:

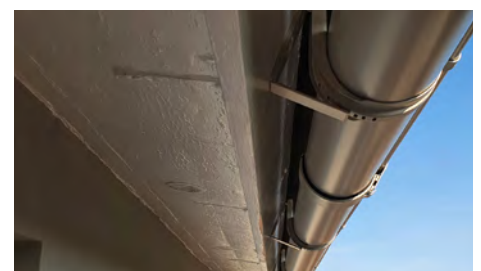
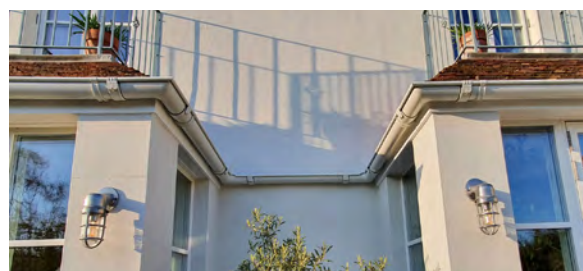
Hastings

### MATERIAL & PROFILE:

115mm Grey White Galvanised Steel Half Round Gutter  
80mm Grey White Galvanised Steel Downpipe

### FINISH:

Robust Grey White RAL9002M colour coating



On this project the customer was installing the system on their own home and replacing an unsuitable and aging plastic system.

They chose to use the colour coated galvanised steel because it was a cost effective alternative to aluminium, and he felt more confident installing it himself.

Rainclear talked to them how to cut the gutters, and suggested using a mitre block, which reportedly worked really well.

Rainclear arranged for fascia bracket 'angle adjusters' to be colour matched and powder coated. (They are usually only supplied, and listed on the website as 'uncoated').

The angle brackets are only necessary where the angle of the fascia board means that the gutter needs to be 'tipped' where the fascia board itself isn't perpendicular (at 90 degrees) to the ground. The angle adjusters only work on the 'older' style longer backed fascia brackets. (Rainclear developed a range of 'short-backed' fascia brackets so that the gutters could be installed closer to the roofline and these have proved to be so popular that they have now taken the place of the older style as the norm).

If you find your project falls outside the norm, get in touch and find out what we can do to help you before you place your order online.