

Uniclass L73141:P4	EPIC
CI/SfB (52.5) lh	

03/08



ALUMINIUM





Specify us using NBS Plus at www.nbsplus.co.uk

As well as in this comprehensive technical guide, our range of products can be specified using the NBS plus website using 'drag and drop' functionality.

The benefits to specifiers are listed below:

You can be sure that what you are specifying is accurate and suitable for the purpose intended.

Accurate specification also reduces the likelihood of the chosen products being substituted for other products.

You can save time without compromising quality, as in many NBS Plus entries all the information required to specify is available within the page, in NBS format.

Overview our products at www.ribaproductselector.com, or in the RIBA product selector.

Rainclear Systems Ltd. Unit 34A Techno Trading Estate Ganton Way Swindon Wilts SN2 8ES
Tel: 0800 644 44 26 Fax: 01793 52 24 71
Email: sales@rainclear.co.uk www.rainclear.co.uk

WELCOME

To Rainclear Systems' technical product guide, we are one of the UK's leading stockists and distributors of specialist rainwater systems.

We have tried to ensure that this guide is easy to use whilst providing you with all the technical information that you may need for aluminium rainwater systems.

This guide details aluminium rainwater which has other added benefits: the factory applied powder coated finish is durable and can be purchased in any RAL / BS colour, and with minimum maintenance will maintain a new appearance. All of our aluminium rainwater systems are available in a full range of profiles.

Our aluminium systems are incredibly light and easy to install and are used and specified on schools, colleges, commercial / industrial buildings and self build projects where an aluminium system is the preferred option to PVCu.

We hope the information within this guide provides all that you require. If, however you need further details please do not hesitate to contact our technical sales department.





ALUMINIUM PRODUCT OVERVIEW	04
section 1 ALUMINIUM HALF ROUND GUTTERS	06
section 2 ALUMINIUM MOULDED GUTTERS	09
section 3 ALUMINIUM OGEE GUTTERS	12
section 4 ALUMINIUM BEADED GUTTERS	14
section 5 ALUMINIUM ROUND DOWNPIPES	16
section 6 ALUMINIUM SQUARE/RECTANGULAR DOWNPIPES	2
ALUMINIUM RAINWATER INSTALLATION GUIDE	26
POLYESTER POWDER COATING GUIDE	28

ALUMINIUM RAINWATER PRODUCT OVERVIEW

Heritage aluminium systems are available in a full range of profiles, half round, beaded half round, victorian ogee and moulded ogee to fit either square or circular downpipes.

All gutters are supplied in 1830mm lengths and are provided with holes that allow nut, bolt and silicone fixing. Gutters are gravity diecast and fittings are pressure cast using commercial LM2 and LM6 aluminium giving a nominal thickness of 4mm.

Both lengths and fittings are cast using modern techniques, but the surface appearance retains its textured finish in keeping with traditional buildings. A tolerance of plus or minus 6.5mm per length ensures straightness.

A choice of 16 standard RAL colours are available with all other RAL / BS colours available to order. All powder coated systems undergo a series of pre-treatments before application of the electro-statically applied powder, the materials are then baked to ensure the powder bonds with the surface to provide a hardwearing and long lasting finish.

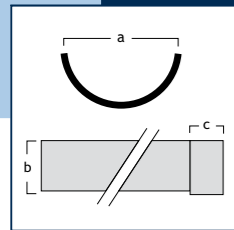
The heritage range has been specifically designed to compliment traditional buildings and will provide the following benefits:

- Lightweight, easy to handle and install
- Extremely strong and durable
- Powder coated system provides excellent anti corrosion properties
- Requires minimum maintenance



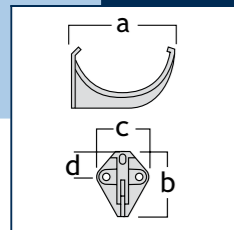
LIGHTWEIGHT

HALF ROUND GUTTER



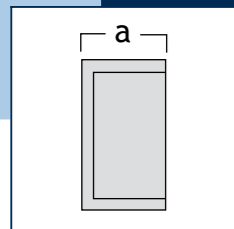
Code	Diameter(A)	B	C	Length	Weight(kg)
AL4HRG	108	47	47	1830	2.6
AL45HRG	121	52	47	1830	4.0
AL5HRG	133	56	47	1830	4.0

HALF ROUND FASCIA BRACKET



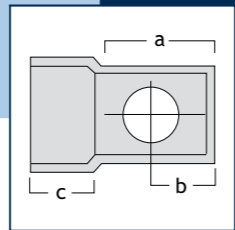
Code	Diameter	A	B	C	D
AL4HRFB	108	108	65	38	38
AL45HRFB	121	121	70	38	41
AL5HRFB	133	133	87	38	47

HALF ROUND STOP END



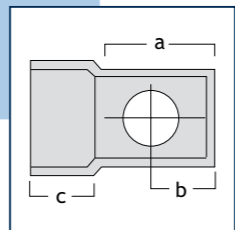
Code	Diameter	A	INT/EXT
AL4HRE1	108	51	EXT
AL45HRE1	121	51	EXT
AL5HRE1	133	51	EXT
AL4HRE2	108	45	INT
AL45HRE2	121	45	INT
AL5HRE2	133	45	INT

HALF ROUND STOP END SOCKET OUTLETS



65MM ROUND SOCKET OUTLET

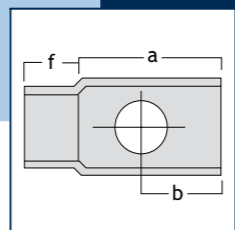
Code	Diameter	A	B	C
AL4SOCO1	108	125	61	47
AL45SOCO1	121	125	61	47
AL5SOCO1	133	125	61	47



75MM ROUND SOCKET OUTLET

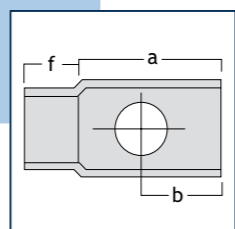
Code	Diameter	A	B	C
AL5SOCO2	133	125	61	47

HALF ROUND STOP END SPIGOT OUTLETS



65MM ROUND SPIGOT OUTLET

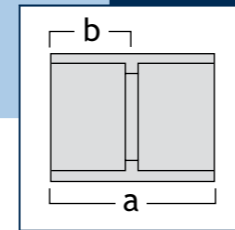
Code	Diameter	A	B	F
AL4SPO1	108	172	64	50
AL45SPO1	121	172	64	50
AL5SPO1	133	172	64	50



75MM ROUND SPIGOT OUTLET

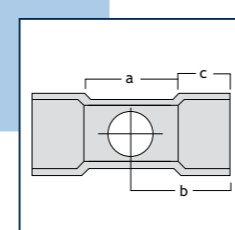
Code	Diameter	A	B	C
AL5SPO2	133	172	64	50

HALF ROUND UNION CLIP



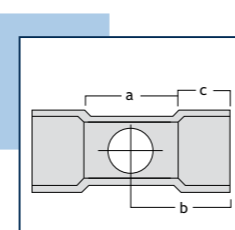
Code	Diameter	A	B
AL4HRU	108	98	49
AL45HRU	121	98	49
AL5HRU	133	98	49

HALF ROUND RUNNING OUTLETS



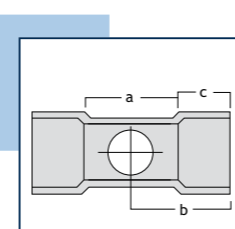
65MM ROUND OUTLET

Code	Diameter	A	B	C
AL4HRRO1	108	148	121	47
AL45HRRO1	121	148	121	47
AL5HRRO1	133	148	121	47



75MM ROUND OUTLET

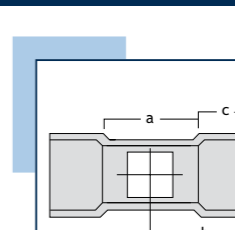
Code	Diameter	A	B	C
AL4HRRO2	108	148	121	47
AL45HRRO2	121	148	121	47
AL5HRRO2	133	148	121	47



100MM ROUND OUTLET

Code	Diameter	A	B	C
AL5HRRO3	133	148	121	47

HALF ROUND RUNNING OUTLETS

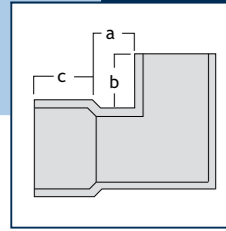


75 X 75MM SQUARE OUTLET

Code	Diameter	A	B	C
AL4HRSO1	108	148	121	47
AL45HRSO1	121	148	121	47
AL5HRSO1	133	148	121	47

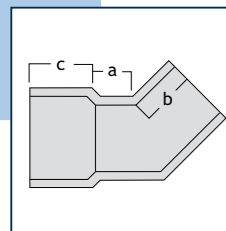


HALF ROUND EXTERNAL ANGLES



90 DEGREE ANGLE

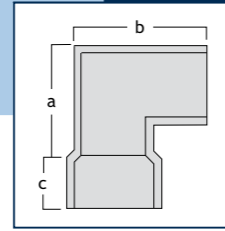
Code	Diameter	A	B	C
AL4HR90E	108	27	77	47
AL45HR90E	121	27	77	47
AL5HR90E	133	27	77	47



135 DEGREE ANGLE

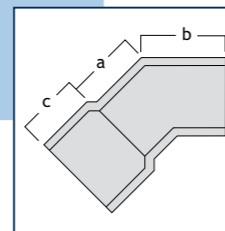
Code	Diameter	A	B	C
AL4HR135E	108	27	77	47
AL45HR135E	121	27	77	47
AL5HR135E	133	27	77	47

HALF ROUND INTERNAL ANGLES



90 DEGREE ANGLE

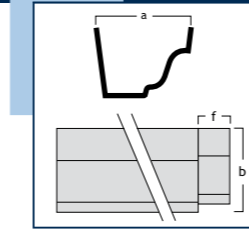
Code	Diameter	A	B	C
AL4HR90I	108	132	183	47
AL45HR90I	121	146	197	47
AL5HR90I	133	157	210	47



135 DEGREE ANGLE

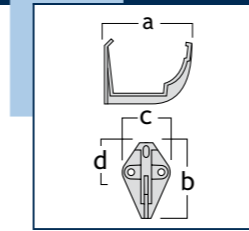
Code	Diameter	A	B	C
AL4HR135I	108	70	120	47
AL45HR135I	121	70	120	47
AL5HR135I	133	70	120	47

MOULDED GUTTER



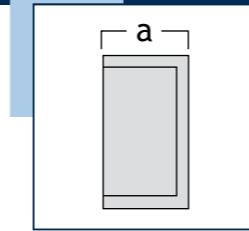
Code	Width(A)	B	F	Length	Weight(kg)
AL43MGT	108	76	50	1830	4.0
AL54MGT	139	102	50	1830	5.4
AL64MGT	162	102	50	1830	6.6

MOULDED FASCIA BRACKET



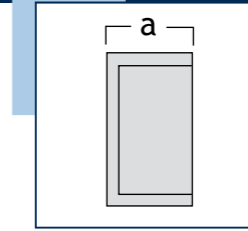
Code	Width	A	B	C	D
AL43MGFB	108	108	92	38	29
AL54MGFB	139	139	121	38	38
AL64MGFB	162	162	122	38	38

MOULDED RIGHT HAND INT / EXT STOP END



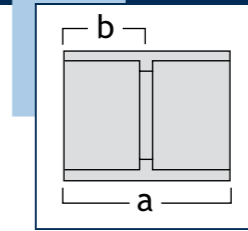
Code	Width	A	INT/EXT
AL54MGE2	139	50	INT
AL43MGE2	108	50	INT
AL64MGE1	162	50	EXT

MOULDED LEFT HAND INT / EXT STOP END



Code	Width	A	INT/EXT
AL43MGE3	108	50	EXT
AL54MGE3	139	50	EXT
AL64MGE4	162	50	INT

MOULDED UNION CLIP

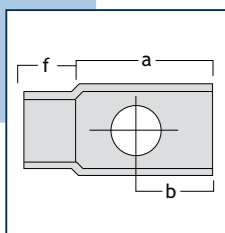


Code	Width	A	B
AL43MGU	108	98	49
AL54MGU	139	98	49
AL64MGU	162	98	49

Spigot on 162 x 102mm (6x4) moulded profile is right handed.

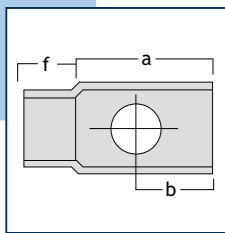
MOULDED ROUND RUNNING OUTLETS

65MM ROUND OUTLET



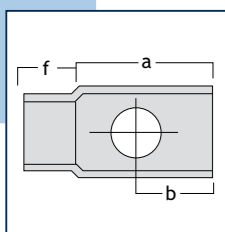
Code	Width	A	B	F
AL43MGRO1	108	190	120	50
AL54MGRO1	139	190	120	50
AL64MGRO1	162	190	120	50

75MM ROUND OUTLET



Code	Width	A	B	F
AL43MGRO2	108	190	120	50
AL54MGRO2	139	190	120	50
AL64MGRO2	162	190	120	50

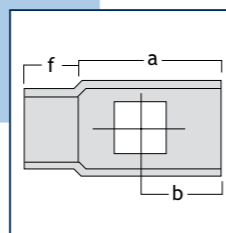
100MM ROUND OUTLET



Code	Width	A	B	F
AL54MGRO3	139	190	120	50
AL64MGRO3	162	190	120	50

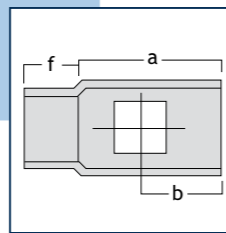
MOULDED SQUARE & RECTANGULAR RUNNING OUTLETS

75 X 75MM SQUARE OUTLET



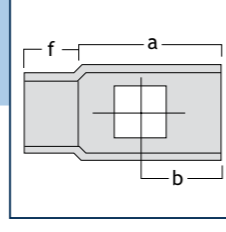
Code	Width	A	B	F
AL43MGSO1	108	190	120	50
AL54MGSO1	139	190	120	50
AL64MGSO1	162	190	120	50

100 X 100MM SQUARE OUTLET



Code	Width	A	B	F
AL54MGSO3	139	190	120	50
AL64MGSO3	162	190	120	50

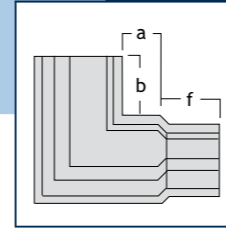
100 X 75MM RECTANGULAR OUTLET



Code	Width	A	B	F
AL43MGSO2	108	190	120	50
AL54MGSO2	139	190	120	50
AL64MGSO2	162	190	120	50

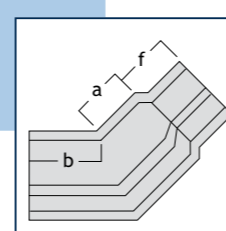
MOULDED EXTERNAL ANGLES

90 DEGREE ANGLE



Code	Width	A	B	F
AL43MG90E	108	25	75	50
AL54MG90E	139	25	75	50
AL64MG90E	162	25	75	50

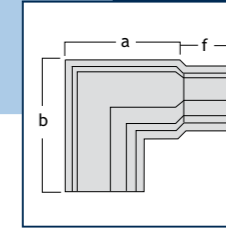
135 DEGREE ANGLE



Code	Width	A	B	F
AL43MG135E	108	25	75	50
AL54MG135E	139	25	75	50
AL64MG135E	162	25	75	50

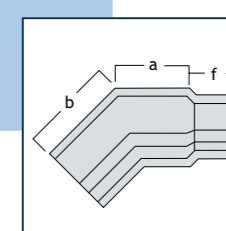
MOULDED INTERNAL ANGLES

90 DEGREE ANGLE

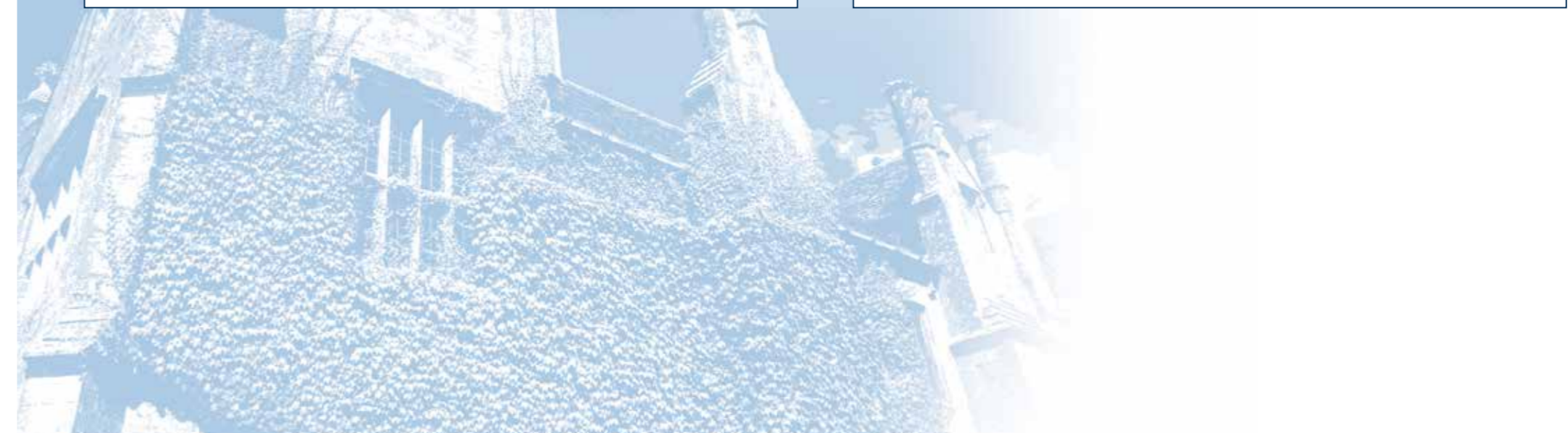


Code	Width	A	B	F
AL43MG90I	108	127	183	50
AL54MG90I	139	158	215	50
AL64MG90I	162	185	238	50

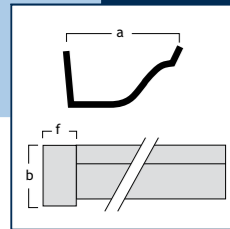
135 DEGREE ANGLE



Code	Width	A	B	F
AL43MG135I	108	62	120	50
AL54MG135I	139	79	130	50
AL64MG135I	162	90	144	50

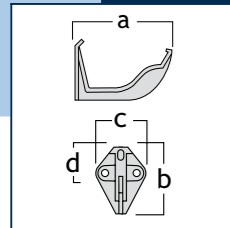


OGEE GUTTER



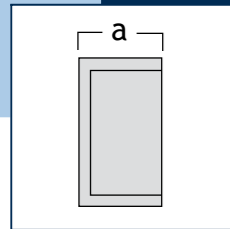
Code	Width(A)	B	F	Length	Weight(kg)
AL4VG	108	54	47	1830	2.6
AL45VG	121	60	47	1830	4.0
AL5VG	133	68	47	1830	4.0

OGEE FASCIA BRACKET



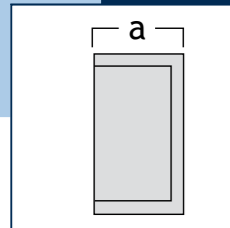
Code	Width	A	B	C	D
AL4VFB	108	108	80	38	32
AL45VFB	121	121	82	38	38
AL5VFB	133	133	93	38	38

OGEE LEFT HAND INT STOP END



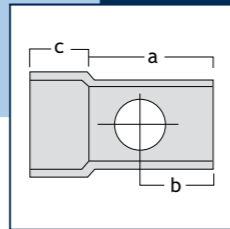
Code	Width	A	INT/EXT
AL4VE2	108	45	INT
AL45VE2	121	45	INT
AL5VE2	133	45	INT

OGEE RIGHT HAND EXT STOP END



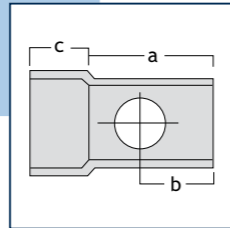
Code	Width	A	INT/EXT
AL4VE1	108	51	EXT
AL45VE1	121	51	EXT
AL5VE1	133	51	EXT

OGEE RUNNING OUTLETS



65MM ROUND OUTLET

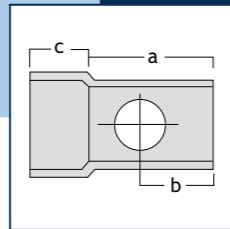
Code	Width	A	B	C
AL4VRO1	108	194	121	47
AL45VRO1	121	194	121	47
AL5VRO1	133	194	121	47



75MM ROUND OUTLET

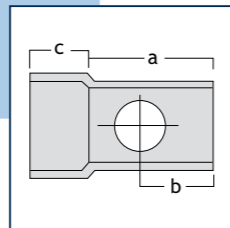
Code	Width	A	B	C
AL45VRO2	121	194	121	47
AL5VRO2	133	194	121	47

OGEE STOP END OUTLETS



65MM ROUND SOCKET OUTLET

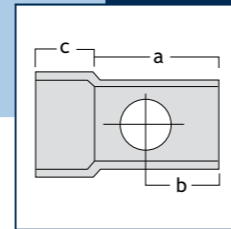
Code	Width	A	B	C
AL4VSOCO1	108	126	64	47
AL45VSOCO1	121	126	64	47
AL5VSOCO1	133	126	64	47



75MM ROUND SOCKET OUTLET

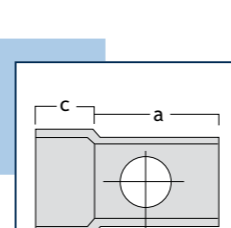
Code	Width	A	B	F
AL5VSOCO2	133	126	64	47

OGEE STOP END OUTLETS



OGEE 65MM ROUND SPIGOT OUTLET

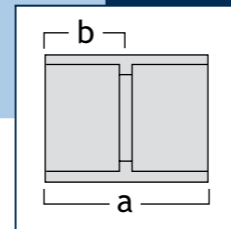
Code	Width	A	B	C
AL4VSPO1	108	172	64	50
AL45VSPO1	121	172	64	50
AL5VSPO1	133	172	64	50



OGEE 75MM ROUND SPIGOT OUTLET

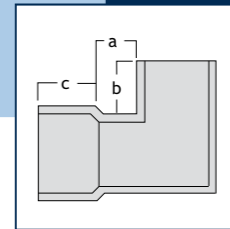
Code	Width	A	B	C
AL5VSPO2	133	172	64	50

OGEE UNION CLIP



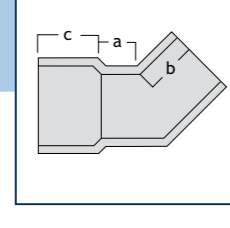
Code	Width	A	B
AL4VU	108	98	49
AL45VU	121	98	49
AL5VU	133	98	49

OGEE EXTERNAL ANGLES



90 DEGREE ANGLE

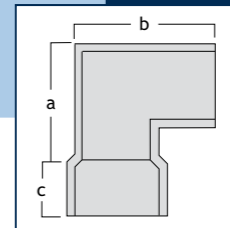
Code	Width	A	B	C
AL4V90E	108	25	75	47
AL45V90E	121	25	75	47
AL5V90E	133	25	75	47



135 DEGREE ANGLE

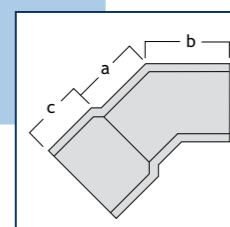
Code	Width	A	B	C
AL4V135E	108	25	75	47
AL45V135E	121	25	75	47
AL5V135E	133	25	75	47

OGEE INTERNAL ANGLES



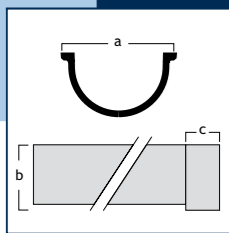
90 DEGREE ANGLE

Code	Width	A	B	C
AL4V90I	108	133	184	47
AL45V90I	121	146	197	47
AL5V90I	133	159	210	47



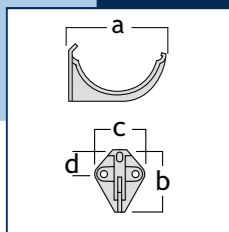
135 DEGREE ANGLE

BEADED GUTTER



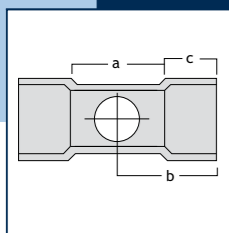
Code	Diameter(A)	B	C	Length	Weight (kg)
AL45BG	131	52	55	1830	3.0
AL5BG	143	56	55	1830	3.0

BEADED FASCIA BRACKET



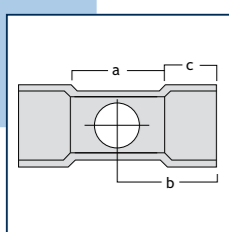
Code	Diameter	A	B	C	D
AL45BGFB	131	131	75	38	35
AL5BGFB	143	143	79	38	36

BEADED RUNNING OUTLETS



63MM ROUND OUTLET

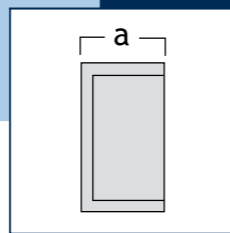
Code	Diameter	A	B	C
AL45BGRO1	131	213	160	55
AL5BGRO1	143	213	160	55



75MM ROUND OUTLET

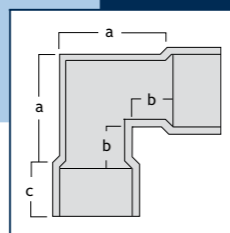
Code	Diameter	A	B	C
AL45BGRO2	131	213	160	55
AL5BGRO2	143	213	160	55

BEADED STOP END



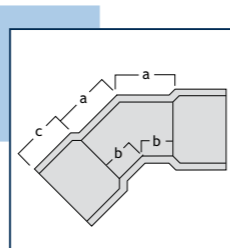
Code	Diameter	A	INT/EXT
AL45BGE1	131	51	EXT
AL5BGE1	143	51	EXT
AL45BGE2	131	45	INT
AL5BGE2	143	45	INT

BEADED GUTTER ANGLES



90 DEGREE ANGLE

Code	Diameter	A	B	C
AL45BG90A	131	192	62	55
AL5BG90A	143	192	62	55



135 DEGREE ANGLE

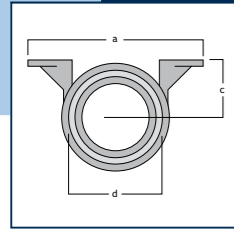
Code	Diameter	A	B	C
AL45BG135A	131	192	62	55
AL5BG135A	143	192	62	55

Please note a 113 x 75mm beaded deeprun system is also available. Please contact Rainclear technical sales for further information.



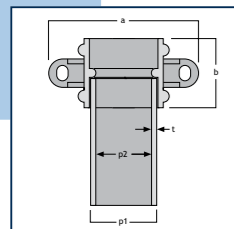
SUSTAINABILITY

ROUND DOWNPIPES



SOCKET (NOMINAL)

Code	Diameter	A	C	D
AL25REDP	65	144	65	73.5 - 70
AL3REDP	75	160	71	88.5 - 81.5
AL4REDP	100	187	90	111.5 - 108



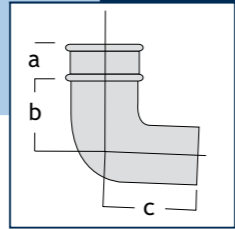
PIPE (NOMINAL)

Code	B	P1	P2	T
AL25REDP	89	63	60.5	1.22
AL3REDP	95	76.5	74	1.22
AL4REDP	90	102	98.5	1.6

All circular sockets are interference fit with the exception of 152mm which are factory welded. Sockets will be supplied loose for site fitting.

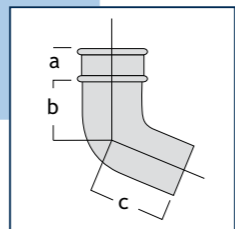
Add suffix 1m, 2m or 3m to denote pipe length.

ROUND DOWNPIPE BENDS



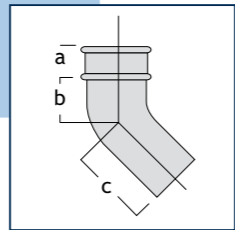
90 DEGREE BEND

Code	Diameter	A	B	C
AL25B90	63	89	21	140
AL3B90	76	95	15	146
AL4B90	102	90	80	159



112.5 DEGREE BEND

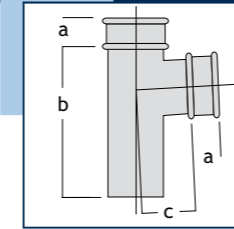
Code	Diameter	A	B	C
AL25B112	63	89	32	110
AL3B112	76	95	26	120
AL4B112	102	90	43	110



135 DEGREE BEND

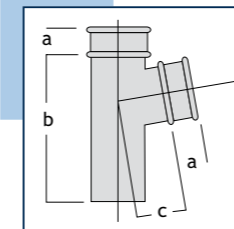
Code	Diameter	A	B	C
AL25B135	63	89	41	107
AL3B135	76	95	35	120
AL4B135	102	90	43	110

ROUND DOWNPIPE BRANCHES



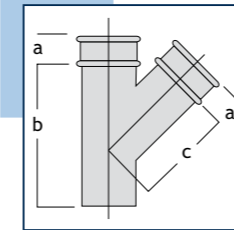
92.5 DEGREE BRANCH

Code	Diameter	A	B	C
AL25J90	63	70	200	79
AL3J90	76	70	220	85
AL4J90	102	90	240	108



112.5 DEGREE BRANCH

Code	Diameter	A	B	C
AL25J112	63	70	200	79
AL3J112	76	70	220	85
AL4J112	102	65	265	108

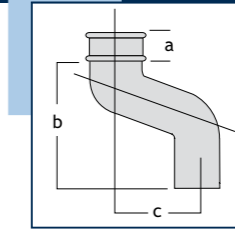


135 DEGREE BRANCH

Code	Diameter	A	B	C
AL25J135	63	70	200	79
AL3J135	76	70	220	85
AL4J135	102	90	300	180

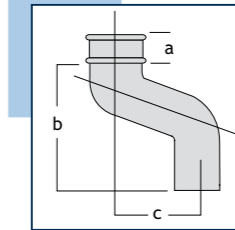
All branches are available with variable diameter side connections.

ROUND FIXED OFFSETS



63MM ROUND OFFSET

Code	Diameter	A	B	C
AL25OS75	63	70	184	76
AL25OS115	63	70	200	114
AL25OS150	63	70	215	152
AL25OS225	63	70	247	228
AL25OS305	63	70	279	304
AL25OS380	63	70	310	381
AL25OS455	63	70	342	457



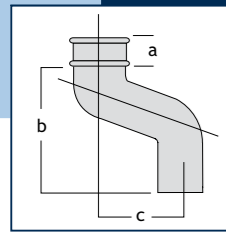
76MM ROUND OFFSET

Code	Diameter	A	B	C
AL3OS75	76	70	187	76
AL3OS115	76	70	203	114
AL3OS150	76	70	218	152
AL3OS225	76	70	250	228
AL3OS305	76	70	282	304
AL3OS380	76	70	313	381
AL3OS455	76	70	345	457

Should offsets with projections different to the ones shown be required please contact Rainclear technical sales for further information.

ROUND FIXED OFFSETS

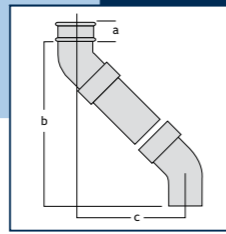
100MM ROUND OFFSET



Code	Diameter	A	B	C
AL4OS75	102	69	205	76
AL4OS115	102	69	221	114
AL4OS150	102	69	236	152
AL4OS225	102	69	268	228
AL4OS305	102	69	300	304
AL4OS380	102	69	331	381
AL4OS455	102	69	363	457

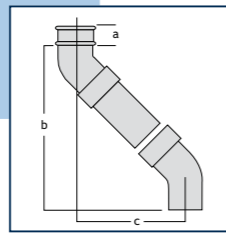
ROUND TWO PART ADJUSTABLE OFFSETS

63MM ROUND OFFSET



Code	Diameter	A	B	C
AL25TP225	63	70	247	229
AL25TP380	63	70	310	381
AL25TP455	63	70	342	457
AL25TP685	63	70	436	685
AL25TP915	63	70	529	914

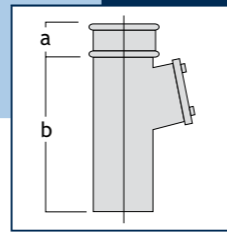
76MM ROUND OFFSET



Code	Diameter	A	B	C
AL3TP225	76	70	250	229
AL3TP380	76	70	313	381
AL3TP455	76	70	345	457
AL3TP685	76	70	438	685
AL3TP915	76	70	534	914

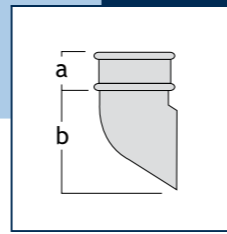
Should offsets with projections different to the ones shown be required please contact Rainclear technical sales for further information.

ROUND ACCESS PIPE



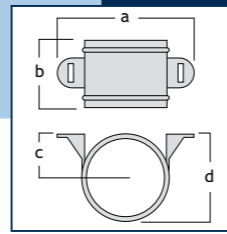
Code	Diameter	A	B
AL25AP	63	70	200
AL3AP	76	70	220
AL4AP	102	90	240

ROUND EARED SHOE



Code	Diameter	A	B
AL25SH	63	55	105
AL3SH	76	64	112
AL4SH	102	69	135

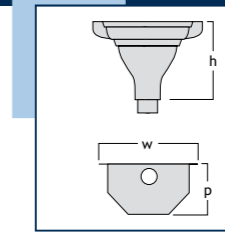
ROUND PIPE SOCKET



Code	Diameter	A	B	C	D
AL25ES	63	144	89	65	73.5 - 70
AL3ES	76	160	95	71	86.5 - 81
AL4ES	102	187	90	90	111.5 - 108

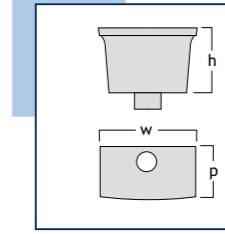
RAINWATER HEADS

FLUTED



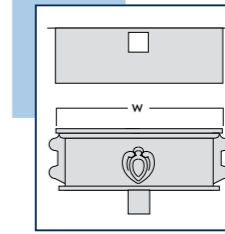
Code	Outlet Diameter	W	P	H
AL25HO1	63	194	168	184
AL3HO1	76	194	168	184
AL4HO1	102	194	168	184

RECTANGULAR



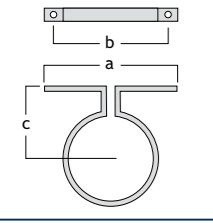
Code	Outlet Diameter	W	P	H
AL25HO2	63	258	190	178
AL3HO2	76	258	190	178
AL4HO2	102	258	190	178

ORNAMENTAL

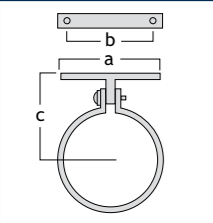


Code	Outlet Diameter	W	P	H
AL25HO3	63	410	186	178
AL3HO3	76	410	186	178
AL4HO3	102	410	186	178

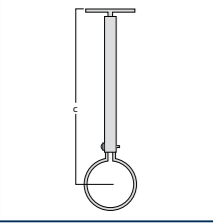
ROUND DOWNPIPE CLIPS



STANDARD BASE				
Code	Diameter	A	B	C
AL25STPC	63	127	95	65
AL3STPC	76	140	108	71
AL4STPC	102	165	133	90

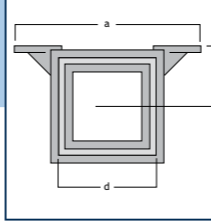


SMALL BASE				
Code	Diameter	A	B	C
AL25SBPC	63	87	47	74
AL3SBPC	76	87	47	80
AL4SBPC	102	87	47	92

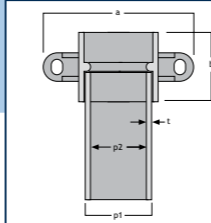


EXTENDED BASE				
Code	Diameter	A	B	C
AL25EBPC	63	-	-	279
AL3EBPC	76	-	-	285
AL4EBPC	102	-	-	304

SQUARE DOWNPIPES

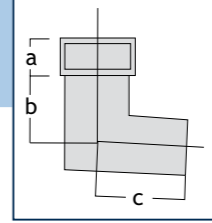


SOCKET (NOMINAL)				
Code	Dimensions	A	C	D
AL33EDP	75 X 75	162	52	82
AL43EDP	100 X 75	191	54	82
AL44EDP	100 X 100	191	67	82

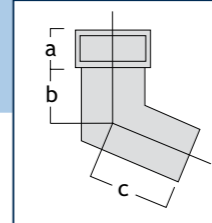


PIPE (NOMINAL)					
Code	Dimensions	B	P1	P2	T
AL33EDP	75 X 75	89	72 X 72	68 X 68	2.0
AL43EDP	100 X 75	95	102 X 76	98 X 72	2.0
AL44EDP	100 X 100	90	102 X 102	97 X 97	2.5

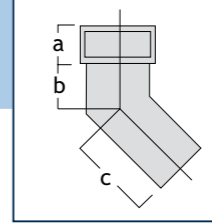
SQUARE & RECTANGULAR BENDS



92.5 DEGREE BEND				
Code	Dimensions	A	B	C
AL33B92	75 X 75	82	67	137
AL43B92	100 X 75	82	80	150
AL44B92	100 X 100	82	81	151



112.5 DEGREE BEND				
Code	Dimensions	A	B	C
AL33B112	75 X 75	82	57	127
AL43B112	100 X 75	82	66	136
AL44B112	100 X 100	82	66	136

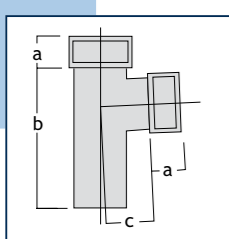


135 DEGREE BEND				
Code	Dimensions	A	B	C
AL33B135	75 X 75	82	47	117
AL43B135	100 X 75	82	58	128
AL44B135	100 X 100	82	53	123

When ordering left or right facing bends please add one of the following suffixes to the product code according to its intended use
 Right Facing Bend = /R
 Left Facing Bend = /L
 Front to Back Bend = /FB

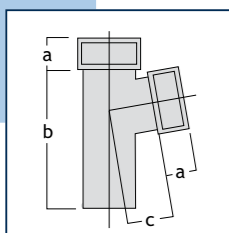


SQUARE & RECTANGULAR RIGHT / LEFT BRANCHES



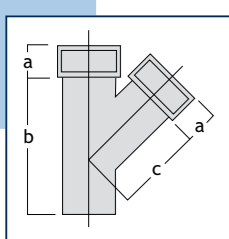
92.5 DEGREE BRANCH

Code	Dimensions	A	B	C
AL33J90	75 X 75	82	230	85
AL43J90	100 X 75	82	230	85
AL44J90	100 X 100	82	230	85



112.5 DEGREE BRANCH

Code	Dimensions	A	B	C
AL33J112	75 X 75	82	248	118
AL43J112	100 X 75	82	248	118
AL44J112	100 X 100	82	248	118



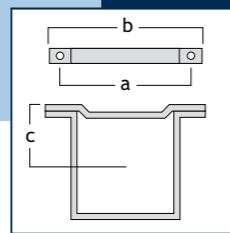
135 DEGREE BRANCH

Code	Dimensions	A	B	C
AL33J135	75 X 75	82	310	190
AL43J135	100 X 75	82	310	190
AL44J135	100 X 100	82	310	190

When ordering branches please add one of the following suffixes to the product code according to its intended use

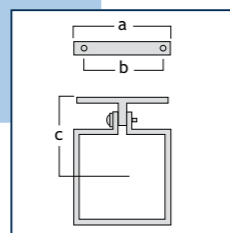
Left Facing Branch = /L
Right Facing Branch = /R

SQUARE DOWNPIPE CLIPS



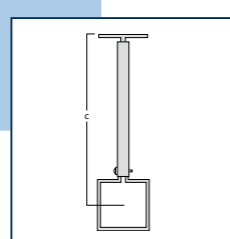
STANDARD BASE

Code	Dimensions	A	B	C
AL33STPC	75 X 75	130	160	52
AL43STPC	100 X 75	160	190	54
AL44STPC	100 X 100	160	190	67



SMALL BASE

Code	Dimensions	A	B	C
AL33SBPC	75 X 75	84	47	78
AL43SBPC	100 X 75	84	47	80
AL44SBPC	100 X 100	84	47	94



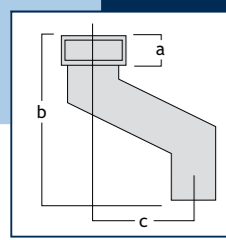
EXTENDED BASE

Code	Dimensions	A	B	C
AL33EBPC	75 X 75	-	-	290 MAX
AL43EBPC	100 X 75	-	-	292MAX
AL44EBPC	100 X 100	-	-	305MAX

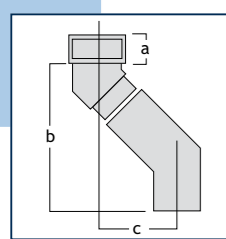


DURABILITY

75 X 75MM SQUARE PIPE OFFSETS

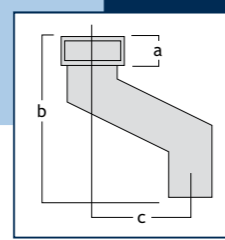


FIXED SQUARE OFFSET				
Code	Dimensions	A	B	C
AL33OS75	75 X 75	82	220	76

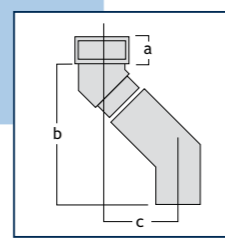


TWO PART SQUARE OFFSET				
Code	Dimensions	A	B	C
AL33OS305	75 X 75	82	310	305
AL33OS525	75 X 75	82	390	533
AL33OS750	75 X 75	82	470	762

100 X 75MM RECTANGULAR PIPE OFFSETS

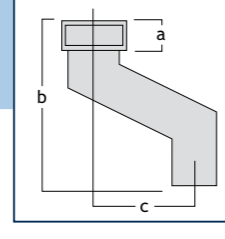


FIXED RECTANGULAR OFFSET				
Code	Dimensions	A	B	C
AL43OS75	100 X 75	82	220	76

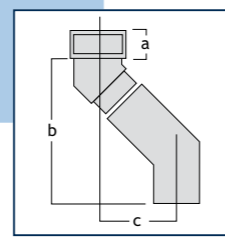


TWO PART RECTANGULAR OFFSET				
Code	Dimensions	A	B	C
AL43OS305	100 X 75	82	310	305
AL43OS525	100 X 75	82	390	533
AL43OS750	100 X 75	82	470	762

100 X 100MM SQUARE PIPE OFFSETS

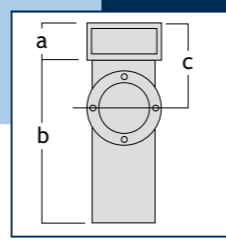


FIXED SQUARE OFFSET				
Code	Dimensions	A	B	C
AL44OS75	100 X 100	82	220	76



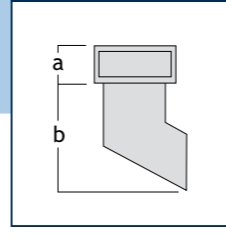
TWO PART SQUARE OFFSET				
Code	Dimensions	A	B	C
AL44OS305	100 X 100	82	345	305
AL44OS525	100 X 100	82	439	533
AL44OS750	100 X 100	82	534	762

SQUARE & RECTANGULAR ACCESS PIPE



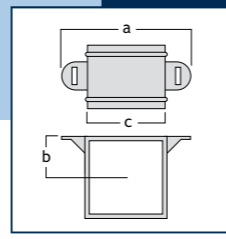
Code	Dimensions	A	B	C
AL33AP	75 X 75	82	266	153
AL43AP	100 X 75	82	266	153
AL44AP	100 X 100	82	266	153

SQUARE & RECTANGULAR DOWNPIPE SHOE



Code	Dimensions	A	B
AL33SH	75 X 75	82	106
AL43SH	100 X 75	82	106
AL44SH	100 X 100	82	148

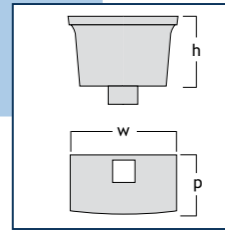
SQUARE & RECTANGULAR PIPE SOCKET



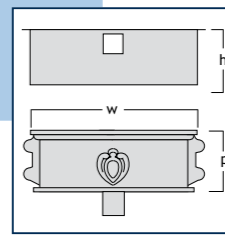
Code	Dimensions	A	B	C
AL33ES	75 X 75	162	52	91
AL43ES	100 X 75	191	54	121
AL44ES	100 X 100	191	67	121

When ordering left or right facing shoes please add one of the following suffixes to the product code according to its intended use
 Right Facing Bend = /R
 Left Facing Bend = /L

RAINWATER HEADS WITH SQUARE/RECT OUTLETS



Code	Outlet Dimensions	W	P	H
AL33HO1	75 X 75	258	190	178
AL43HO1	100 X 75	258	190	178
AL44HO1	100 X 100	258	190	178



ORNAMENTAL				
Code	Outlet Dimensions	W	P	H
AL33HO2	75 X 75	410	186	178
AL43HO2	100 X 75	410	186	178
AL44HO2	100 X 100	410	186	178

When ordering offsets that are required to face left or right please add one of the following suffixes to the product code according to its intended use, otherwise leave blank for standard front to back offset.
 Left Facing Offset = /L
 Right Facing Offset = /R

ALUMINIUM RAINWATER INSTALLATION

Gutters

Fall

A fall of 1:600 to 1:350 (maximum) should be allowed for, however gutters may be laid level if this fall cannot be obtained.

Fixing

Fix brackets just below roof edge, thus allowing the gutter to be fixed centrally along the length. Use 12 x 38mm round head zinc plated or sheradized roundhead screws and washers for fixing fascia brackets, these should be countersunk screws for rafter brackets.

Gutters should be fixed at 900mm centres on brackets. Angles and outlets should be supported with additional brackets. Hopper heads or outlets should be fixed first, followed by a length of gutter. For slated roofs the gutter may be placed with the centre line under the tile drip edge, pantile roofs however should be set slightly further out. When fixing through the back of gutters, screws should be tensioned evenly to prevent gutter damage.

Ogee, Moulded and No. 46 profiles can be directly fixed to fascia boards through the rear of the gutter and at recommended 600mm centres. Cast No.46 gutter must be fixed with the sole of the gutter level, this can be achieved by placing a batten between gutter and fascia board or by using the supplied fixing support bracket at a minimum 2 no per length.

When using fixing slots at the rear of gutters, always ensure screws are placed centrally to allow for thermal movement.

Jointing

Cast aluminium gutters are jointed by M6 dome head aluminium screws, nuts and washers and a suitable low modulus silicone sealant. Joints must be thoroughly cleaned and mill finish gutters should be primed

(Dow Corning 1200, Feb Primer No.5). Apply sufficient silicone sealant to socket so that when fixed with aluminium nut and screw some excess is produced on the joint. A minimum 3mm thickness should be applied on all joints and around holes.

Any screws used in the sole should be tightened first; do not over tighten screws and ensure that any surplus sealant is cleaned off.

ALUMINIUM RAINWATER INSTALLATION AND MAINTENANCE

Downpipes

Fixing

Pipes are fixed back to the wall at 2mt centres through pipe sockets using No.12 x 50mm roundhead screws. On walls that accommodate rawlplugs, a washer should be used beneath screw head. Large holes are provided to allow fixing with drive in nails or 6mm expanding bolts.

Jointing

Sockets are provided separately from pipes, these must initially be tapped onto plain end pipes with a protective wood block to create a socketed pipe. A light application of silicone sealant should be provided between socket and pipe to provide a completely watertight joint.

A 4mm gap should be left between the top pipe and flange of the lower socket to allow for thermal movement. All pipe and socket joints should then be sealed with a low modulus silicone sealant.

On Site Painting

For all mill finish products firstly degrease with white spirit and clean thoroughly. Prime with a zinc phosphate or similar aluminium primer and apply two full top coats of gloss paint. Undercoating is not required.

Design Service

Using dedicated design software we are able to calculate the most appropriate system of gutters and downpipes required, considering the following:

Size and flow rates of gutters and pipes

Geographical rainfall

Number and size of outlets

Catchment area

Care & Maintenance

Regularly clean out hopper heads and outlets and ensure that all joints and fixings are secure. This should be completed every six months. Do not place ladders against the gutter when carrying out maintenance.

Mill Finish Goods

Mill finish goods will develop a natural grey aluminium oxide coating which forms a protective layer, preventing further oxidization.

Polyester Powder Coated

Clean polyester powder coated surfaces by washing down with a warm detergent solution. Never use harsh chemicals or abrasive materials. In aggressive industrial or marine environments this cleaning should be carried out every three months.

POLYESTER POWDER COATED COLOUR OPTIONS •

The standard range shown comprises of 16 standard colours to compliment traditional and contemporary building applications. All other BS or RAL colours can be supplied as special order.

The polyester powder coating process complies with the requirements of BS6496: 1984

The aluminium undergoes several pre-treatment processes before the application of the powder coat. Once the electrostatically applied powder has been received by the goods these are 'baked' using a controlled process to ensure full bonding. This finish and resulting performance greatly exceeds site painting.

Delivery

Goods are then shrink wrapped in polythene prior to dispatch to offer further protection.

	RAL 1011m Brown Beige		RAL 3005m Wine Red
	RAL 1013m Pearl White		RAL 6005m Moss Green
	RAL 2002m Vermillion		RAL 7038m Agate Grey
	RAL 5003m Sapphire Blue		RAL 8019m Grey Brown
	RAL 1021m Cadmium Yellow		RAL 6018m Yellow Green
	RAL 3003m Ruby Red		RAL 8017m Chocolate Brown
	RAL 5010m Flower Blue		RAL 9016m White
	RAL 7024m Graphite Grey		RAL 9017m Black



Specify us using NBS Plus at www.nbsplus.co.uk

As well as in this comprehensive technical guide, our range of products can be specified using the NBS plus website using 'drag and drop' functionality.

The benefits to specifiers are listed below:

You can be sure that what you are specifying is accurate and suitable for the purpose intended.

Accurate specification also reduces the likelihood of the chosen products being substituted for other products.

You can save time without compromising quality, as in many NBS Plus entries all the information required to specify is available within the page, in NBS format.

Overview our products at www.ribaproductselector.com, or in the RIBA product selector.

Rainclear Systems Ltd. Unit 34A Techno Trading Estate Ganton Way Swindon Wilts SN2 8ES
Tel: 0800 644 44 26 Fax: 01793 52 24 71
Email: sales@rainclear.co.uk www.rainclear.co.uk



Unit 34A
Techno Trading Estate
Ganton Way
Swindon
Wilts
SN2 8ES

T: 0844 414 22 66
F: 01793 52 24 71

E: sales@rainclear.co.uk
W: www.rainclear.co.uk